

# ORION®

## INSTRUCTION MANUAL

---

### ELECTRIC FAN

ENGLISH

GB

Model: OF1606



AC230V~50Hz, 55W

RoHS



<http://www.orion.ua>

**DEAR CUSTOMERS!**  
**MANY THANKS FOR BUYING ORION ELECTRIC FAN!**

We really believe you will get the greatest pleasure from using this device for the years!

Please, read the user's guide in detail before first using of this fan.

**CAUTION**

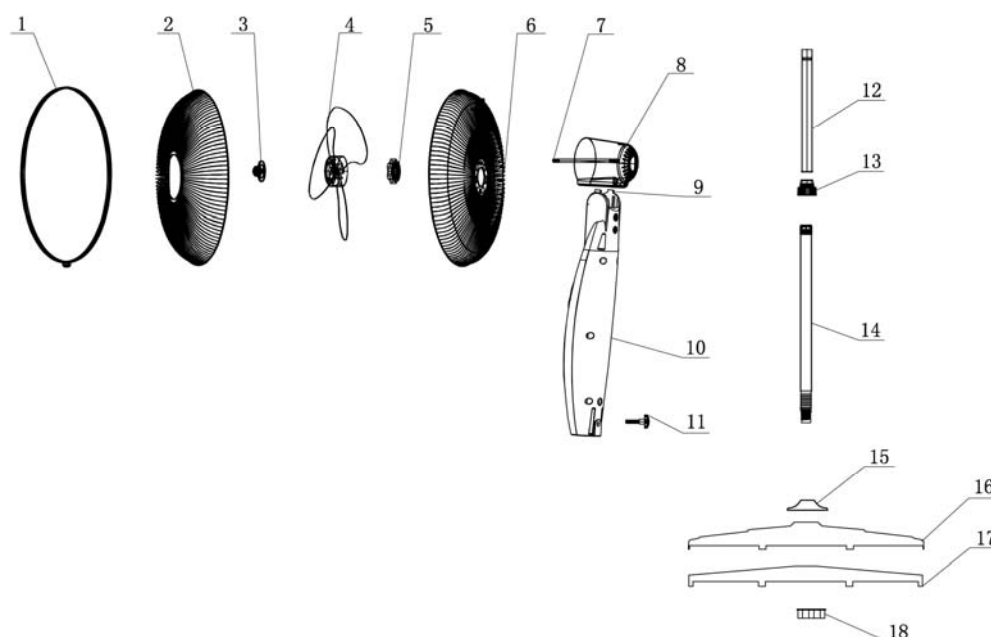
---

1. Never put your finger or other something into the cover to avoid any burst.
2. Make sure to keep the fan far away from humidity, chemical articles and oil.
3. While cleaning, be sure not to splash water and do not use oil, alcohol or chemical articles as they may cause distortion of fan body and cause electrical hazards.
4. Do not pull out the power supply by pulling power supply cord, which may lead to electrical shock or generating electrical shock.
5. Keep away from curtain; clothing or other something may affect the fan's working.
6. Turn off all switches and pull out power supply plug when you go out for a long time.
7. Never use the fan before finishing assembly to avoid any hurts.
8. If the supply cord is damaged, it must be repaired by the manufacture or its service agent or a similarly qualified person in order to avoid hazard.
9. If the unit doesn't work before sending for maintaining, please check the plug of power supply has been inserted into socket with electricity.
10. Do not use the electric fan in rain.
11. This appliance is not intended for use by person (including children) with reduced physical, sensory or mental capabilities, or lack of experience and knowledge, unless they have been given supervision or instruction concerning use of the appliance by a person responsible for their safety.

Children should be supervised to ensure that they do not play with the appliance.

**PARTS**

---



1.	Shroud ring.	7.	Output shaft	13.	External joint
2.	Front cover	8.	Motor and motor cover	14.	Support tube
3.	Fastener for fan blade	9.	Joint	15.	Dustproof cover
4.	Лопасті.	10.	Panel	16.	Cover of base
5.	Fan blade	11.	Bolt	17.	Aided base
6.	Back cover	12.	Up-down tube	18.	Fastener for support tube

## INSTALLING AND USING

First step: assemble and connect the base with assembly up-down tube and support tube. Open the casing and take our base. Then assemble the tube and cover of up-down tube and support tube. Slip decorative cover to base alongside the tube of support tube and adjust up-down tube to height. Then rotate tighten the external joint.

Second step: assemble fan blade

1) Assemble guard cover and shroud ring

Tighten back cover enclosure to the motor by fastener.(pay attention to direction of rotation).

Place joint of shroud ring downwards and cover the deep groove of shroud ring to the circle side of back cover enclosure. Then tighten the bolts at the position of joint properly by nut.

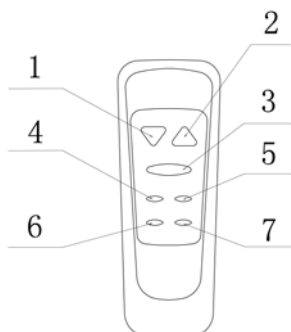
2) Install fan blade

While installing fan blade, please wedge groove on the back of fan blade on spacer pin of output shaft motor. Then tighten the fixing nut of fan blade anti-clockwise.

3) Assemble front cover

Insert the circle of front cover into the groove of shroud ring, which has been fixed to the back cover. Finally fasten the bolts into screw of the joint of shroud ring.

## REMOTE CONTROLLER



1.	Speed down button
2.	Speed up button
3.	Turn on button
4.	Wind mode button
5.	Timer button
6.	Swing button
7.	Turn off button

## OPERATION

### Setting of wind speed and wind type

Pressing button of wind speed can adjust the speed of wind, which have 8 speeds. Wind type: sleeping, normal and natural – press Wind mode button to select.

### Setting of shaking

Press the swing button and fan will rotate.

### Setting of timer

This fan can work 30min, 60min, 90min, 120min, 150min, 180min 210min, 240min, 270min, 300min, 330min, 360min, 390min, 420min and 450min by setting the timer:

press 1:30min, 0.5h lamp on

press 2:60min, 1h lamp on

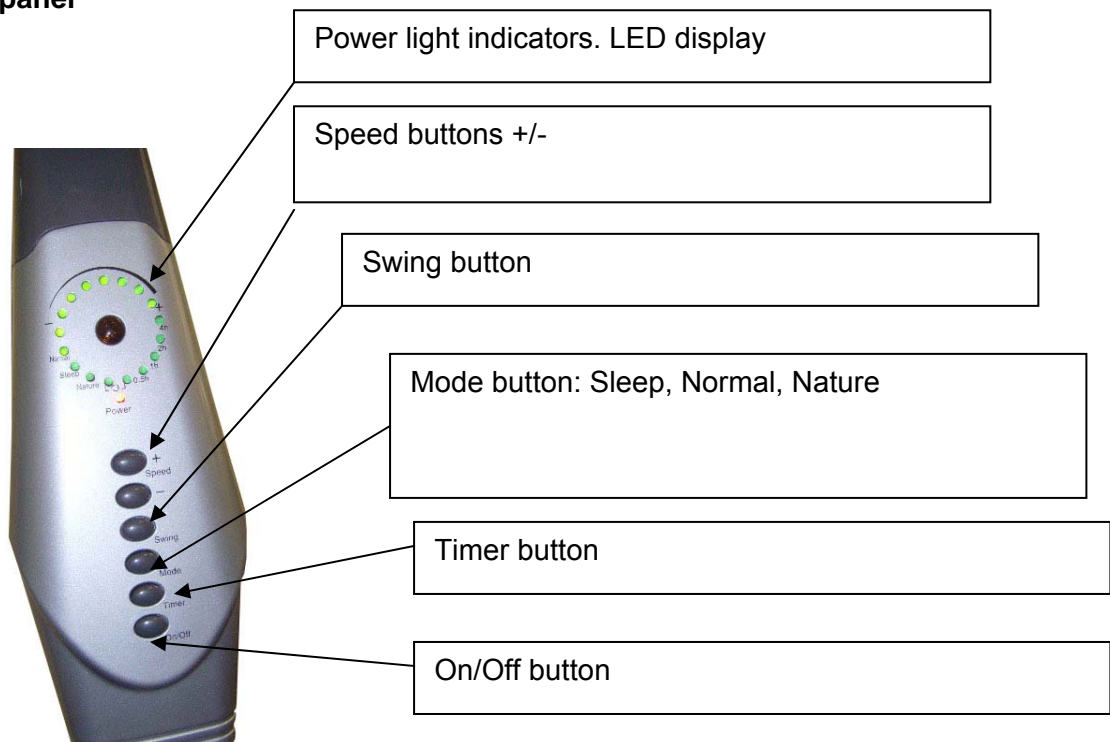
press 3:90min, 0.5h & 1h lamp on

press 4:120min, 2h lamp on

press 5:150min, 2h & 0.5h lamp on

press 6:180min, 2h & 1h lamp on  
 press 7:210min, 2h, 1h & 0.5h lamp on  
 press 8:240min, 4h lamp on  
 press 9:270min, 4h & 0.5h lamp on  
 press 10:300min, 4h & 1h lamp on  
 press 11:330min, 4h, 1h & 0.5h lamp on  
 press 12:360min, 4h & 2h lamp on  
 press 13:390min, 4h, 2h & 0.5h lamp on  
 press 14:420min, 4h, 2h & 1h lamp on  
 press 15:450min. 4h, 2h, 1h & 0.5h lamp on

### Control panel



### MAINTENANCE AND STORING

1. Be sure to switch off the power supply and pull out the plug before cleaning.
2. This machine only needs common external cleaning and wiping.
3. Do not rub with gasoline, acid and alkali, in order to avoid fade and damage appearance.
4. When it is stored, it should be cooled and put in the box and in a dry, ventilation place.

### SOLUTION TO SIMPLE FAILURE

When starting the fan, the fan blade doesn't work. Please check whether the power plug has really inserted into the socket or the cover has distorted, which has touched the fan blade. If the noise comes when starting the fan, please check the unit as follows:

- (1) Fan blade has been fight installed into the output shaft of motor.
- (2) Groove on back of cover has matched the inserting groove on to the output shaft.
- (3) There are tiny defective edge ring existing around the fan blade.
- (4) The cover has distorted, which has touched the fan blade.

## TECHNICAL DATA

---

16' oval oscillation stand fan  
5 blades  
8 speed settings  
7,5 hours timer  
3 kinds of wind  
Remote controller  
Adjustable height  
Safe and reliable  
Easy to install and disassemble  
Voltage: AC230V~ 50Hz  
Power: 55W  
Color: dark gray with silver  
Net/Gross weight: 5,4kgs/6,2kgs  
Box size: 585x180x440mm

Extra information on ORION company web-site [www.orion.ua](http://www.orion.ua)  
We take your opinion and offers by E-mail [support@orion.ua](mailto:support@orion.ua)