

**ORION ORJ-019**  
***INSTRUCTION MANUAL***  
**(ENGLISH)**

## Main technical parameter

Voltage: AC 220-240V 50Hz

Power: 400W

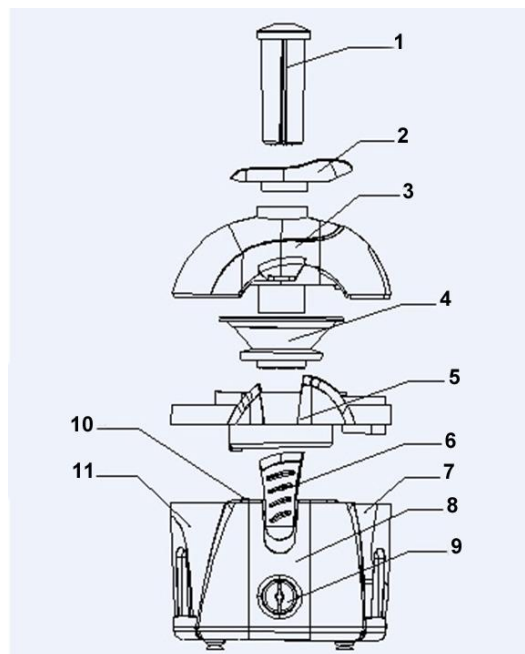
550ML juice mug and pulp container

## Main function

Juice extractor: apple, carrot, other fruit, vegetable.

## Units name and assembling

1. Pusher
2. Fruit tray
3. Transparent cover
4. Blade set
5. Juice collector
6. Lock
7. Pulp container
8. Body
9. Switch
10. Safety switch
11. Juice container



1. Please rip off the packing and paster before use.
2. Normal use for the first time, some smoke or strange smell from the main body during using is nothing serious.
3. Assemble the juice collector (5) on the main body.
4. Assemble the blade set (4) on the axis of rotation, and press it down properly.
5. Put the transparent cover (3) on the juice collector (5) rightly; lock the locker on the two sides at the same time, which make the safety switch activated. Otherwise, the safety switch will not be activated, the motor will not work.
6. Put the residue container (7) under the residue outflow rightly, and put the juice container (11) under the juice outflow rightly. (Please see the picture)
7. Turn on the power, switch on, and start to work. Put in a whole apple, long size fruit or vegetable inside through the feedhole, pushing them down slightly with the pusher. If some fruit cannot push down easily, please push them down to-and-fro, which should be ok.

### NOTE:

- a. When it is working, don't put your hands or other object to the feedhole.
  - b. In order to get more juice; please don't press the pusher speedily.
  - c. Shut down the power before cleaning the juice collector.
  - d. For easy cleaning, suggest place a plastic bag into the residue container to collect residue.
8. Finish using, switch off and take out the power plug; disassemble the units (1, 2, 3, 4, 5, 7, 11) to wash them with water, then dry and assemble again.
  9. In order to have a best extracting effect every time, the filter net should be cleaned up carefully after using.

## Attention

---

1. The machine should be laid on a flat table or place when it is working, then operate it according to the instruction manual.
2. There is a safety protective switch; it cannot be worked until it is installed correctly.
3. There is a protective device against super-high temperature, when the temperature is too high, the power will be shut down automatically, and will run again automatically when the motor is cool. (It takes about 15 mins.)
4. Don't work continuously over 1 minute. The appliance works again until it cools down completely to prolong its service life.
5. If the power cord was damaged, for safety please call for the professionals of the manufacturer or special maintaining department to change it.
6. The main body is not allowed to clean with water directly; wet cloths, soft brush or sponge can scrub it.
7. Operating by children is not admitted.
8. Please put the juicer extractor in the dry and ventilative place if it is not used for a long time.

## Safety instructions

---

When using electrical appliance, hereunder the basic safety precautions should always be followed:

1. Read all instructions before using.
2. Close supervision is necessary when the appliance is operated near children. Do not allow children to use this appliance.
3. Always use the appliance on a dry & level surface. Do not place on or near a hot gas or electric burner or any hot surface.
4. Handle the appliance carefully; if the unit is dropped or bumped, it may cause the unit to malfunction.
5. Do not let cord hang over edge of table or touch hot surfaces or being knotted.
6. To protect against electric shock, do not immerse cord, plug or motor base in water or other liquid.
7. Do not operate any appliance with a damaged cord or plug or after the appliance malfunctions or has been damaged in any manner. Return the appliance to service center for examination.
8. Always leave the appliance unplugged when not in use or assembling. Connect the appliance only to properly wired wall outlet. Do not use extension or multi socket & do not plug it into the same outlet or use it on the same circuit with other appliances. A circuit overload could occur.
9. If your AC wall outlet becomes loose, it may get overheat. Should this happen, consult a qualified technician.
10. The use of accessory attachments not recommended by the appliance manufacturer may result in fire, electric shock or injury to persons.
11. Do not use the appliance if the rotating sieve is damaged.

Extra information on ORION company web-site [www.orion.ua](http://www.orion.ua)  
We take your opinion and offers by E-mail [support@orion.ua](mailto:support@orion.ua)