

ORION®

INSTRUCTION MANUAL

ELECTRIC

ENGLISH

GB

SHAVER

Model: OR-SH3001



When using your electrical appliance, basic precautions should always be followed, including the points listed below. Read the manual before using.

DANGER

To reduce the risk of electric shock:

1. Do not reach for an appliance that has fallen into water. Unplug immediately. Some electrical parts inside the shaver are electrically living even with the switch off.
2. Do not use while bathing or in a shower.
3. Do not place or store appliance where it can fall or be pulled into a tub or sink. Do not place in or drop into water or other liquid.
4. Except when charging, always unplug this appliance from the electrical outlet immediately after using and charging.
5. Unplug this appliance before cleaning.

WARNING

To reduce the risk of burns, fire, electric shock or injury to persons:

1. Close supervision is necessary when this appliance is used by, on or near children or invalids.
2. Use this appliance only for its intended use, as described in this manual. Do not use attachments not recommended by the manufacturer.
3. Never operate this appliance if it has a damaged cord or plug, if it is not working properly, if it has been dropped or damaged or dropped into water. Return the appliance to a service center for examination and repair.
4. Keep the cord away from heated surfaces.
5. Never operate the appliance with the air openings blocked or while on a soft combustible surface, such as a bed or couch, where air openings may be blocked. Keep the air openings (if any) free from lint, hair or the like.
6. Never drop or insert any object into any opening on this appliance.
7. Do not use outdoors or operate with aerosol (spray) products or where oxygen is being administered.
8. Always attach plug to appliance first. To disconnect, turn all controls to OFF then remove plug from outlet.
9. Battery may be self-discharging. Charge the shaver before using it for the first time or when it has not been in use for long-term putting in place, the inner blade has the possibility of no operating or rotating power.
10. Do not put in place or charge the shaver where it will be the near of a heat source or exposed to direct sunlight.
11. When charging, push down switch, otherwise appliance cannot be charged.

BEFORE USE

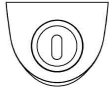
1. Before operating this unit, please read these instructions completely and keep the manual in a safe place.
2. Disconnect the power cord from the shaver before cleaning.
3. The shaver foil is very thin and manufactured with precision accuracy, it can be damaged if handled improperly. Do not roughly handle the appliance. Damaged foil must be replaced immediately to prevent personal injury.

CHARGING

1. Charge the shaver where the temperature is above 0°C and below 40°C.
2. Rated input voltage of the shaver is 230V. Avoid charging the shaver too long time since it will shorten the product life.
3. Connect the power cord to the shaver, and plug the other end to an AC outlet.



The red charge status lamp will glow when the shaver is being recharging, you can fully charge the shaver in 8 hour (Differs depending on the use situation).



USING YOUR SHAVER

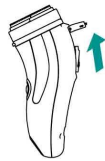
1. Press the On/Off switch button to turn the shaver on.



2. Hold the shaver at a right angle (90°) to your skin. Stretch your skin with your free hand and move the shaver back and forth in the direction of your beard. The shaver works better on dry face. Your skin and beard may need 2-3weeks to get used to the shaver.



3. Using the trimmer: slide the trimmer handle up to open the trimmer. Place the trimmer at a right angle to your skin and move it downward to trim sideburns.



4. Turn the shaver off.
5. Put on the protective cap.

It is recommended that you replace the shaving head at least once every 2 years to maintain the cutting performance (please use only original components).



CLEANING YOUR SHAVER

- 1.Regular cleaning will keep your shaver in good condition and maintain the cutting performance.
- 2.Warning – to prevent electric shock or personal injury, disconnect the power cord from the shaver before cleaning, unplug the adaptor.

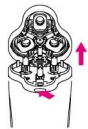
Head assembly

Clean the shaver head every week.

1. Clean the head assembly with the brush.

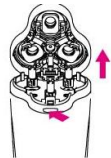


2. Press the head release button and the shaver head will automatically open.

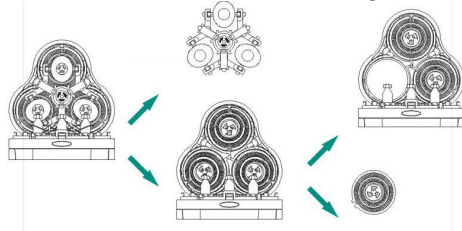


Clean the inner blades once every two months

1. Press down the shaving head release button and the foil frame will automatically open.



2. Grasp the bearing of the head assembly firmly and turn against the arrow direction to remove the whole shaving head proceeding as follows:



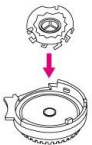
3. Take out the inner blades from the shaver heads and clean them carefully. (see fig.)



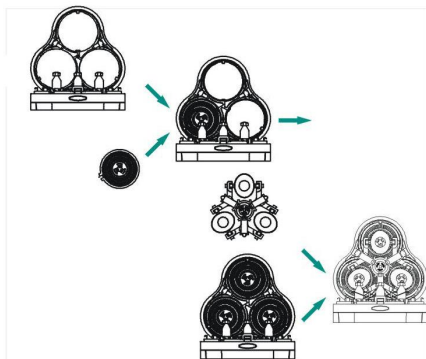
4. Clean the protective cap.



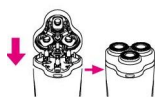
5. Insert the clean blades into the round heads.



6. Insert the inner blade one at a time by pressing it firmly, until it snaps into the bearing.



7. Press down the shaver head until it snaps into the shaver



Warning: Damaged foil must be replaced at once.

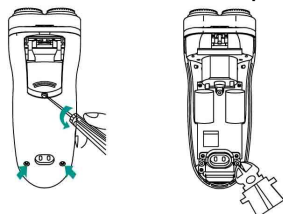
DISPOSAL OF BATTERY

Remove the built-in rechargeable battery before disposal of the shaver. Please make sure that the batteries are disposed of at an officially assigned location, it should not be mixed with general household waste.

Disconnect the adaptor from the shaver

Wait until the inner blades stop turning.

Remove the screws und open the shaver.

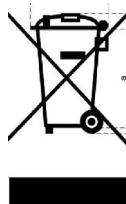


Take out the batteries.

TECHNICAL DATA

Power input	3W
Input voltage	230V, 50Hz
Rechargeable time	8h

CORRECT DISPOSAL OF THIS PRODUCT



This marking indicates that this product should not be disposed with other household wastes throughout the EU. To prevent possible harm to the environment or human health from uncontrolled waste disposal, recycle it responsibly to promote the sustainable reuse of material resources. To return your used device, please use the return and collection systems or contact the retailer where the product was purchased. They can take this product for environmental safe recycling.

Extra information on ORION company web-site www.orion.ua

We take your opinion and offers by E-mail support@orion.ua