



USER'S GUIDE

VACUUM CLEANER

ENGLISH

GB

Model: OVC-028

Important safety instructions

The use of any electrical appliance requires the following common sense safety rules. Primarily there is danger of injury or death and secondly the danger of damage to the appliance. These are indicated in the text by the following two conventions:

Warning: Danger to the person!

IMPORTANT: Damage to the appliance! In addition we offer the following safety advice.

Location

- Do not use or keep this product outside when it is raining.
- Do not store the appliance near hot ovens or heating appliances.

Mains lead

- Do not allow the mains lead to become strained or run this appliance over it.
- If the electrical cable becomes damaged, the complete cable assembly must be replaced. Do not attempt this task yourself. Contact the local retailers.

Children

Children do not understand the dangers associated with operating electrical appliances. Never allow children to use this appliance.

Personal safety

- The plug must be removed from the wall socket before cleaning or maintaining the appliance.
- Never modify the cleaner in any way.
- Never use in the presence of explosive liquids or vapors.
- Never pick up inflammable or poisonous liquids such as petrol, copier toner or other volatile substances. Never pick up acids, asbestos or asbestos dust.
- Repairs to electrical appliances are only to be undertaken by trained personnel. Unprofessional repairs can be dangerous for users.
- The appliance must never be left running when unsupervised.

Product safety

- Never use the appliance without the filters being installed.
- Never use the appliance to vacuum hot ashes, broken glass, sharp objects or liquids.
- To protect against fire, electric shock and personal injury do not immerse cord, plug or cleaner in water or other liquid.

Electrical requirements

Check that the voltage on the rating plate corresponds with your house electricity supply which must be A.C (alternating current)

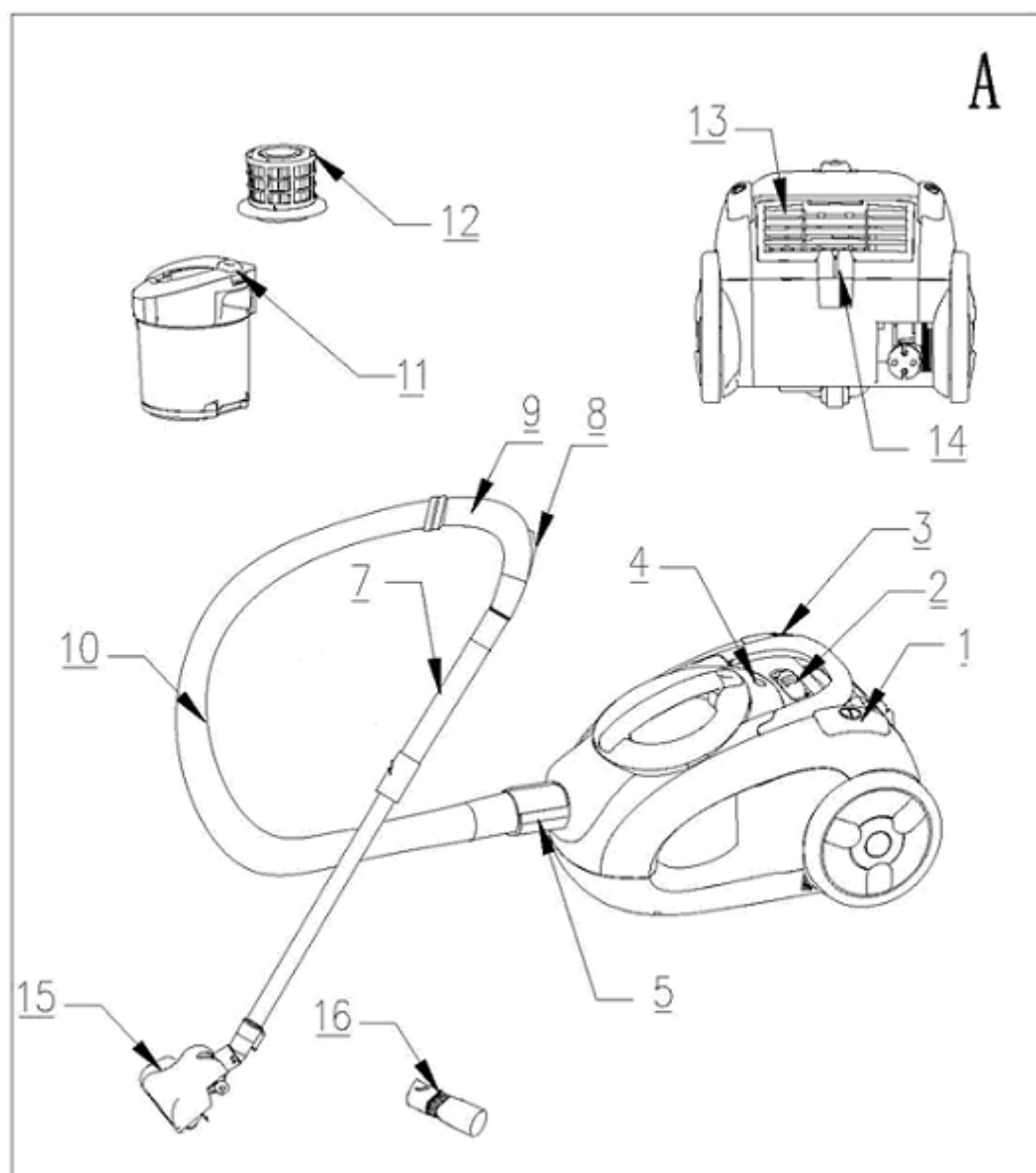
If the socket outlets in your home are not suitable for the plug supplied with this appliance the plug should be removed and the appropriate one fitted.

If you cut off the plug and let go of the cable it will rewind into the machine.

Therefore you must pull out a length of the cable and secure it before cutting off the plug and refitting a new one.

IMPORTANT: The plug removed from the mains lead. If severed, must be destroyed as a plug with a bared flexible cord is hazardous if engaged into a live socket outlet.

ILLUSTRATION



Features

1. On/off switch-button
2. Varies power button
3. Cable rewind button
4. Full dust indicator
5. Hose inlet
7. Metal compound tube
8. Airflow regulator
9. Hose handle
10. Hose
11. Dust container
12. Hepa filter

13. Air outlet cover
14. Floor brush storage clip
15. Floor brush
16. Crevice nozzle

Quick start

1. Assemble the nozzle, the tube and hose. **A**
2. Pull out the mains cable to its full length and plug into the mains supply.
3. Switch on by pressing the On/off switch-button. **1**

Accessories

Insert the flexible hose

Fit the hose to the cleaner by inserting the hose end into the hose inlet **5** until it clicks to the position.

To remove the flexible hose

When removing, squeeze the clips up side and pull it out.

Fitting the tubes and accessories

1. Attach the tube to the handle end of the hose.

The hose handle features an airflow regulator **8** which allows suction to be reduced as required.

2. Attach the floor brush **15** to the tube.

3. Attach the crevice nozzle **16** to the tube.

Turn the rotating nozzle as the arrowhead show; it can be used as the upholstery nozzle (for curtains and upholstery).

Turn the rotating nozzle backwards to the home position; it can be used as the crevice nozzle (for awkward places, behind radiator; or for hard surfaces, pelmets, delicate objects etc).

Controls

Power

The on/off control is operated by On/off switch-button. **1**

Variable power

A Variable power switch **2** varies the suction power as required .For example, maximum suction can be used for cleaning carpets, hard floors etc, and reduced suction for cleaning upholstery and curtains.

Suction can also be controlled using the airflow regulator **8** on the handle .Closed for maximum suction, open for reduced suction.

Automatic cable rewind

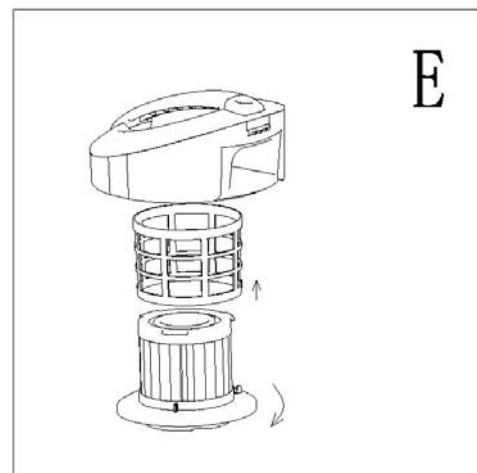
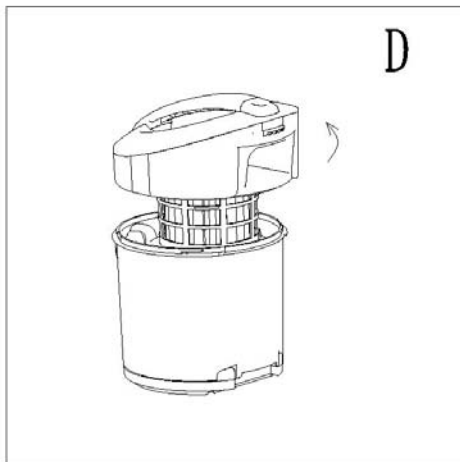
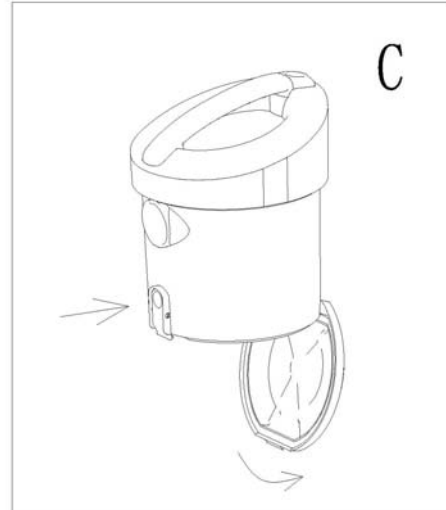
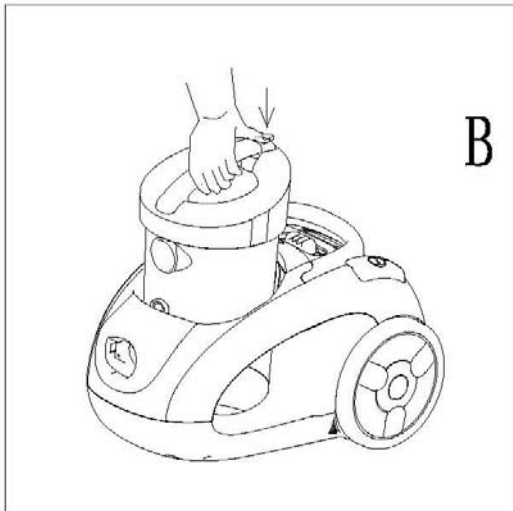
After use, unplug and press the cable rewind button **3** to retract the cable.

WARNING: When using the cable rewind, always hold the plug as the cable will rewind quickly.

Dust disposal

To obtain the best result from your cleaner, empty the dust container when the full dust indicator **3** is light, otherwise the airflow and cleaning power will be reduced.

1. Remove the dust container from the product by pressing the dust container button, and pulling the dust container away from the product. **B**
2. Holding the dust over a dustbin press the dust release button as shown, the bottom of the dust container will drop down to release the dirt. **C**
3. Close Push the dust container back into the product to refit.
4. The bottom of the dust container by pressing the base upwards until it clicks into place.



Cleaning the HEPA filter

To maintain the suction of the cleaner, the HEPA filter must be washed regularly.

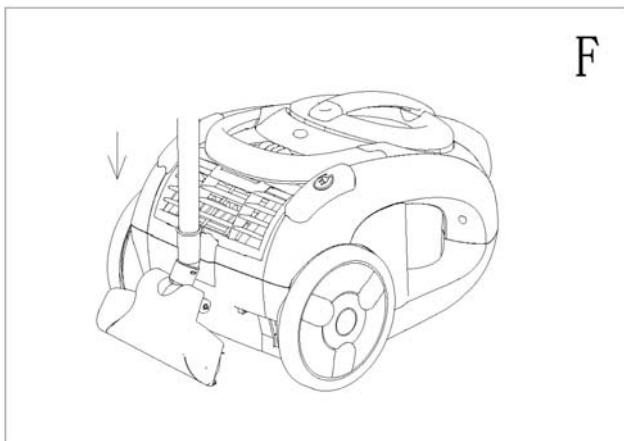
After emptying any dirt into the dustbin. **C**

1. Remove the HEPA filter 12 from the dust container by turn the dust container back cover anticlockwise. Remove the HEPA filter cover by. **D**
2. Remove the filter cover from HEPA as shown **E**
3. Rinse the HEPA filter cover in the lukewarm water and **DRY THE FILTER COVER COMPLETELY.**

IMPORTANT: Do not use detergents to clean the filter. The HEPA filter must be thoroughly dry before the machine is used.

Storage position

When finished you can store the tube by locating the tube storage clip¹² into the slot on the back of the cleaner as shown. **F**



Correct Disposal of this product

This marking indicates that this product should not be disposed with other household wastes throughout the EU. To prevent possible harm to the environment or human health from uncontrolled waste disposal, recycle it responsibly to promote the sustainable reuse of material resources. To return your used device, please use the return and collection systems or contact the retailer where the product was purchased. They can take this product for environmental safe recycling.



Subject to change without notice

Extra information on ORION company web-site www.orion.ua

We take your opinion and offers by E-mail support@orion.ua