

ORION

USER'S GUIDE

**WATER FILTRATION
VACUUM CLEANER**

ENGLISH

GB

Model: OVC-021

IMPORTANT SAFEGUARDS

When using an electrical appliance, basic safety precautions should always be observed, including the following

READ ALL INSTRUCTIONS BEFORE USING YOUR VACUUM.

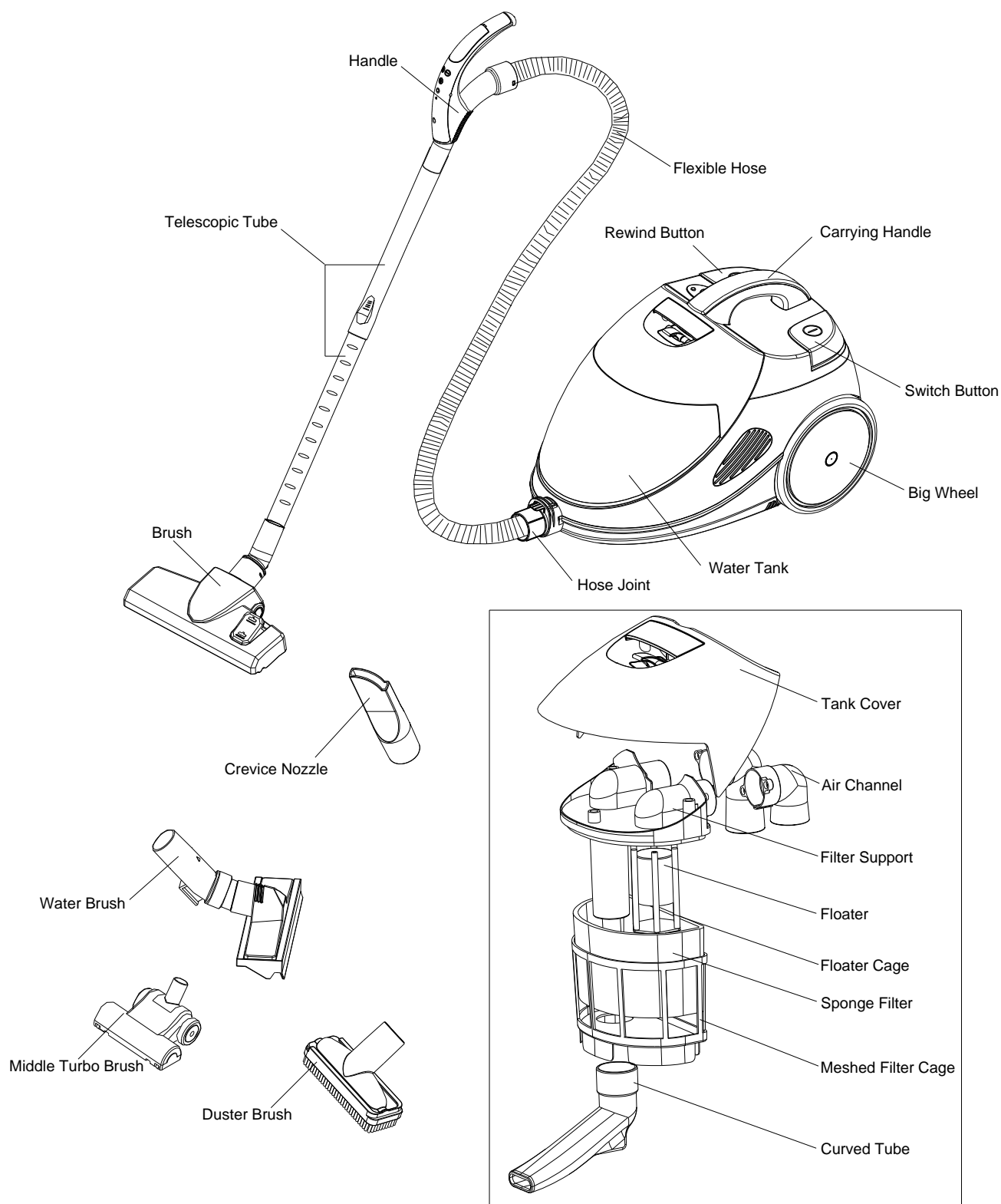
WARNING: To reduce the risk of fire, electrical shock, or injury:

1. To ensure safe and correct use of your product, do not operate without first reading this operation manual thoroughly.
2. To avoid shortening the life span or damaging your product, do not use the machine with part or accessories not recommended by this manual. Use only original spare parts or accessories.
3. Do not allow children or unsuitable persons to operate the system.
4. Ensure that the vacuum cleaner is placed on a flat surface when in operation.
5. Do not touch the main plug with wet hands. Do not operate the machine with wet hands. Do not operate the machine in an excessively wet environment.
6. Do not put any object into openings. Do not use with any opening blocked; keep free of dust, lint, hair and anything that may reduce airflow.
7. Keep hair, loose clothing, fingers, and all parts of body away from openings and moving parts.
8. Do not use the machine for vacuuming hot or burning objects including ash.
9. Turn off the control before unplugging
10. Do not use the machine for vacuuming any type of chemicals, acids or solvents. This will damage the machine.
11. Do not use the product near explosive materials, inflammable liquids or any type of gas. Such usage can cause fire or explosions.
12. Keep end of hose, wands and other openings away from your face and body
13. Do not use for any purpose other than described in this user's guide.
14. Using improper voltage may result in damage to the motor and possible injury to the user. Correct voltage is listed on the rating label.
15. Do not disconnect the AC plug from the main outlet roughly. Never remove the AC plug by pulling the cord; always pull out the plug by holding the plug itself.
16. Do not connect or disconnect the AC plug from the main outlet with wet hands. This may result in an electrical shock.
17. Always switch-off your machine and disconnect the AC plug from the main outlet when the appliance is not in use.
18. Do not use your machine if the AC cord or plug is damaged.
19. If the cleaner is damaged, it must be repaired by the manufacturer or its service agent in order to avoid a hazard.
20. This appliance is not intended for use by children or other persons without assistance or supervision if their physical, sensory or mental capabilities prevent them from using it safely. Children should be supervised to ensure that they do not play with the appliance.
21. If the supply cord is damaged, it must be replaced by the manufacturer or its service agent or a similarly qualified person in order to avoid a hazard.
22. The vacuum cleaner must not be left unattended while it is connected the supply mains.
23. This vacuum cleaner is for household use only
24. The plug must be removed from the socket-outlet before cleaning or maintaining the vacuum cleaner.

Caution:

- **Do not overfill the water container. Note the 'Maximum Level' marking.**
- **Do not fill the water container with anything other than water.**
- **Always empty the dirty water, clean and store you machine correctly after each use.**

Part and Accessories Index



Features

- Water-based vacuum system plus twin HEPA filters system.
- Multi filtration system (8-stages) capable of capturing bacteria particles down to the size of 0.3Microns.
- Uses no bag and non-direct HEPA filter and as a result: no clogged pores, no loss of suction or airflow, no indoor air pollution and no costly replacement bags.
- 4-Speed motor with electronic control for the best use of suction power and ultimate convenience.
- 2 in 1 water squeegee reaches under low furniture, fixtures and fittings and allows liquid suction.
- Automatic switch off when the float switch goes up for safety.
- Mixing of Bio-fresh anti-bacterial, anti-allergenic & non –chemical fresheners such as Mountain Pine, Tropical Citrus & Country Lavender with water, helps to purify and disinfect indoor air as well as eliminate unpleasant odors.
- 2 HEPA filters at system's motor air outlet means the air coming out, is even cleaner than the air going into the system.
- Optional Turbo Power Brush allows deep cleaning of mattresses and rugs. Also ideal for removing loose hair and fluff from carpeted floors and upholstered surfaces.

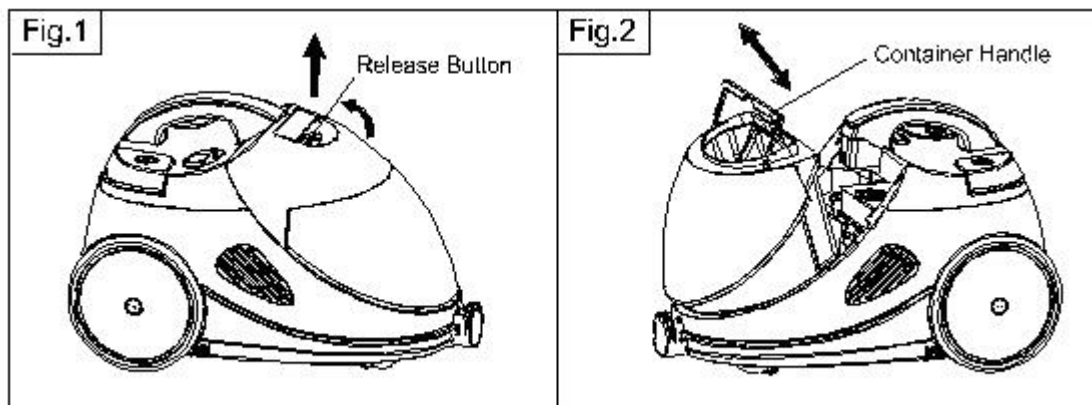
Effectiveness

- Eco-Active water filter captures and retains dust & dirt in water without polluting the indoor air.
- Multi filtration including HEPA filter provides **99.99%** efficiency in purifying the air and capturing micro-organisms down to 0.3 Microns in size, such as dust, pollen, dust mites and their feces, pet hair & dander.
- A second HEPA filter at the motor air outlet stops all the carbon powder from the motor and ensures providing the ultimate indoor air quality. No more 2nd pollution.
- When operating the product, the water filter system makes and blow out natural Minus Ion, so the product is acting as a Minus-Ion generator or an air cleaner when it is operated.
- By not using dirty and blocked paper bags or direct HEPA filter, the product maintains its maximum airflow & efficiency at all times.
- The product is a real **Green Vac, Hygienical Vac, Healthy Vac.**

Preparation before use

1. Setting Up the Product

- Rotate (upside) the release button and lift up the cover, take out the filter assembly. (Fig.1)
- Pull off the water container using the container handle. (Fig.2)



- Fill the container with tap water to 'Max Water Level' indicated on the front of the container. This is about 1.5 liters. Please ensure the container is not overfilled. (Fig.3)
- Place the water container back to the body. And put back the filter assembly into the water container. (please make sure that the curved tube towards to the front of the water container). Close and lock the cover. The locking mechanism will "Click" when locked.
- Insert the flexible hose into the hose socket. (Fig.4)
- Connect the telescopic tube to the flexible hose, and then connecting with accessories such as floor brush, water brush, etc. Now it is ready for use.

2. Power On

- Extract the AC power cord fully by holding the cord and pull it towards you. Do not pull the cord by holding the plug. as this will damage the cord.
- Connect the plug to a suitable mains power outlet with the correct voltage.

Caution: Before connect the plug to the power socket, unwind a sufficient length of cable. A yellow mark on the power cable shows the ideal cable length. Don't extend the cable beyond the red mark.

- Press firmly and turn on the main ON/OFF switch. One green indicator light will flash. The machine is now on 'Standby' mode. At this stage, your machine is ready to work.
- Push the standby button on the main body will activate the machine in the lower suction mode.

Caution: Make sure the AC power cord is fully extracted. During the operation a partially extracted power cord will generate excessive heat.

Use of your product

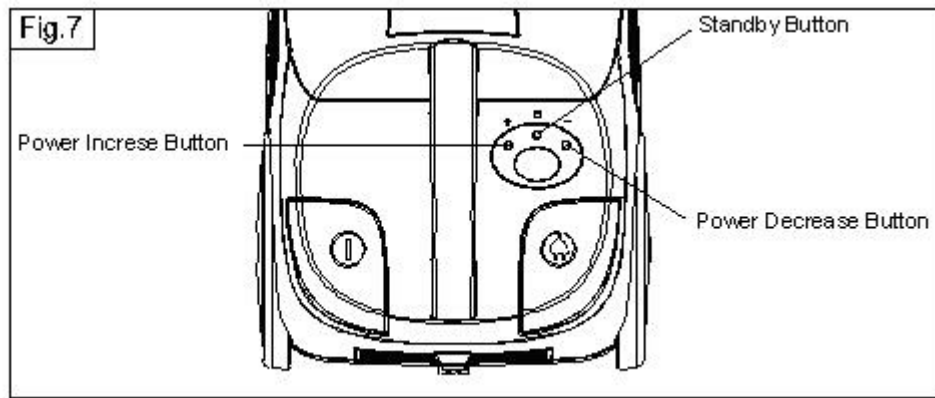
1. Power control on body:

---Standby Button

- This button is used to switch between standby mode and operation mode. The initial push turns the suction power on at the low mode. While the machine is operating, push this button returns the machine to the standby mode.

---Suction Power Selection Button

- There are four suction power setting, Low, Medium, High and Turbo. Use (+) or (-) button on the main body of the machine to select the desired setting. (Fig.7)
- The suction power class is indicated by the numbers of green indicating lights. For example: three green lights means the suction power is now at the 3rd high position.(total 4 positions.)



2. Remote power control:

This vacuum machine is also used a remote speed control device on the hose handle to control the power. You can use buttons on the hose handle to switch off or adjust the suction power of the machine.

- **Standby Button**

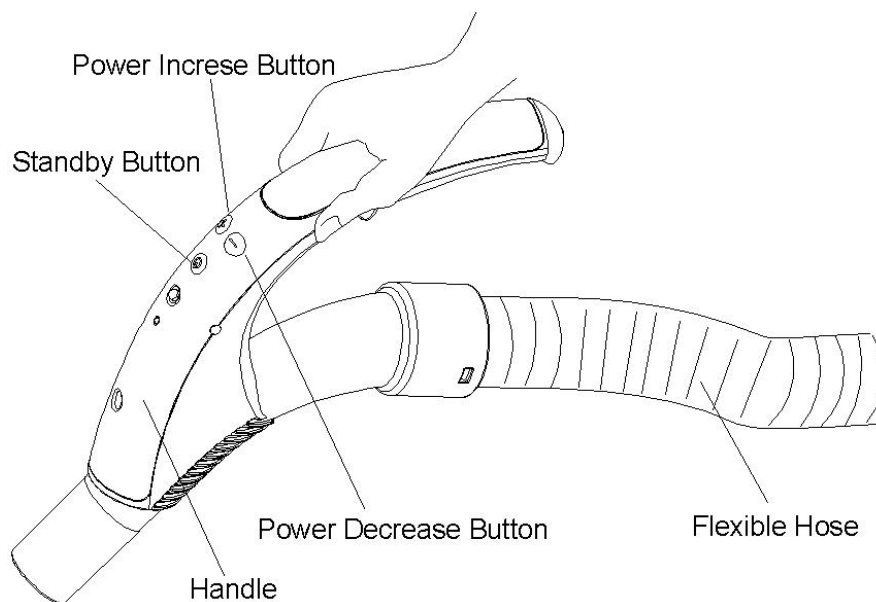
This button is used to switch between standby mode and operation mode. While the machine is operating, push this button returns the machine to the standby mode. And push again to re-start the machine. (within 10 seconds, the standby button has power memory. Namely, if you re-start the machine within 10 seconds, the machine will work at the same power as last time.)

- **Suction Power Selection Button**

Use (+) or (-) button on the hose handle to adjust the suction power of the machine.

Note:

** If the remote control function is unworkable, please check the battery and change the battery inside the handle.



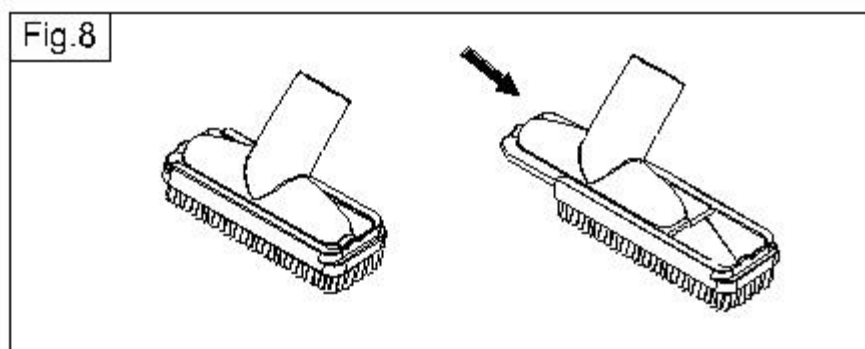
3. Telescopic Tube

- The extendable Telescopic Tube gives you added flexibility and control. Depending on your application and situation, you may adjust the length of the Telescopic Tube to suit your needs. Push and hold the locking knob, extend or retract the telescopic pole as required. Release the knob and pull the extended tube slightly to lock it in place.

4. Crevice Tool : Use this accessory tool for corners, crevices and cracks.

5. Multi Duster Brush

- The Multi Duster Brush (2 in 1) is for removing dust from all type of surfaces such as lampshades, electric equipment, air conditioner grills, car dashboards etc. Separately it can be used as a sofa nozzle. (Fig.8)



6. Water Brush & Liquid Suction

- The Water Brush is so versatile that it can be used for vacuuming both solid and liquid dirt and is mainly for use on hard floor surface.

Caution: If you use your machine for liquid suction. Make sure you first reduce the amount of water in the tank by about half. It is also important not to allow the tank to become too full of vacuumed liquid.

Before liquid suction you must change the carpet brush with the Water Brush

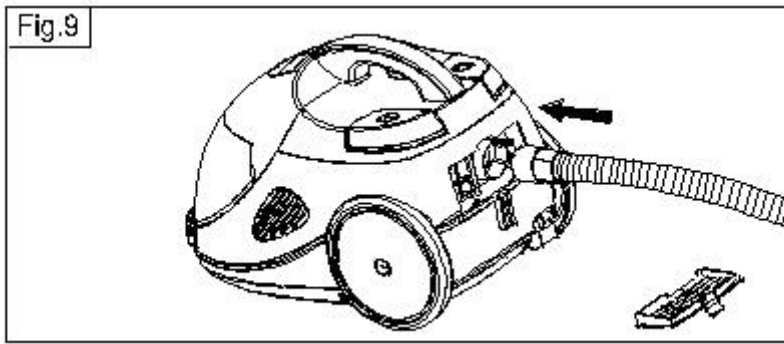
When you finish, empty the tank completely and vacuum up about one liter of clean water to rinse clean the inside of the Flexible Hose and the Telescopic Tube. Repeat if necessary.

To dry the inside of Hose & the Tube, detach the Water Brush, and run your machine for a few minutes without sucking up any dirt. Wash and dry the water brush separately.

Vacuum soapy liquid or detergent should be avoided, as this causes frothing inside the water tank.

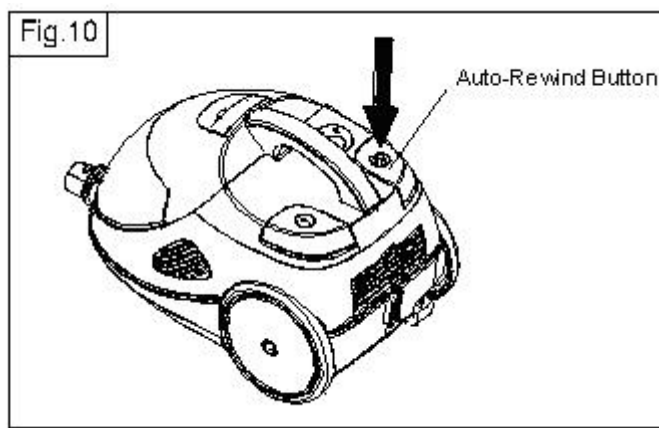
Функция выдувания воздуха Air-Blow Function

- Вы можете перенастроить пылесос на выдувание воздуха путём присоединения гибкого шланга к воздуховыпускному отверстию, которое расположено за решеткой воздуховыпускного отверстия с задней части прибора. Как снять решетку, смотрите раздел «Чистка и хранение прибора». You may convert your machine to blow air out by attaching the Flexible Hose to the machine's air outlet socket. See **“Product Care and Storage”** on how to remove the Air Outlet Grill. (Fig.9)
- Функция выдувания воздуха рекомендуется для собирания в кучу разбросанного сухого мусора, такого как листики, конфетти, а также для другой цели. The Blower Function is recommended for use to gather scattered dry waste such as leaves and confetti or any other purpose.



Automatic Cord Storage

- Your system comes with an Automatic Cord Storage system. Push the button at the back of the machine and the cord is retracted automatically. The large button also allows this to be done with your foot.



Caution: While nearing the end of the retraction, hold on to the end of the cord and guide it into the cord storage compartment. The force and speed of the retraction may cause the plug to snap back and hit something.

Product Care and Storage

Always switch off the main switch and disconnect the AC cord from the electrical outlet before cleaning you machine or replacing any part.

1. General

- You may wipe the machine with a damp cloth. Synthetic detergent may be used on plastic and metal parts if necessary. Make sure you wipe the machine and its parts dry before storage.
- Do not use strong cleaning agents such as benzene or thinner to clean the machine.
- Always store your product and parts after they are completely dried.

2. Cleaning and Maintenance of the filter assembly.

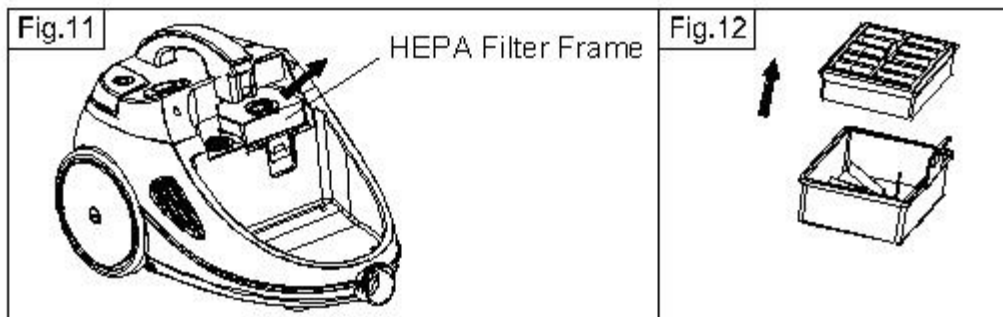
- It is high recommended that you pour away the dirty water and clean the container and the filter assembly after each use. Keeping your home clean using a clean appliance is an advantage that the machine has over

‘bag’-vacuum cleaner.

- To empty the water container, pull the Cover Release Level upwards.(Fig1)
- Lift up the cover and pull out the filter assembly and remove the water tank with the handle on the tank.. (Fig2)
- Empty the container and clean, rinse and leave to dry.
- Regularly dismantle and clean the filter assembly.
- Remove the curved tube by pulling it from the meshed filter cage.
- Pull out the filter cage and remove the sponge filter. Wash and rinse all the components. Dry before assembling them. (Note: the sponge filter must be equipped on the filter cage during working the machine.)
- To remove stubborn dirt from the container and the filter assembly, use normal washing-up liquid but make sure it is rinsed thoroughly afterwards.

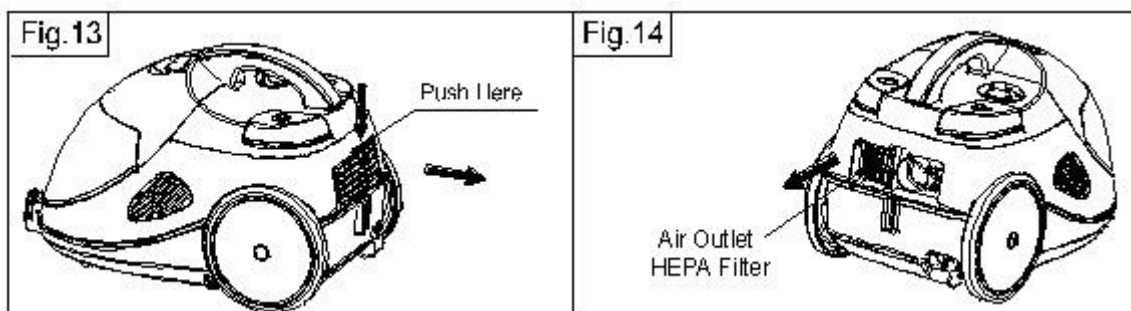
3. Front HEPA Filter

- If there is a noticeable drop in the suction power, this is an indication that the HEPA filter needs to be changed with a new one or to be washed.
- Pull the Cover Release Level upwards and lift up the Tank Cover. (Fig1), then remove the water tank (Fig2), take out the HEPA Filter Frame. (Fig11)
- Remove the HEPA Filter from the frame and insert a new one or wash it. (Fig12)



4. Air Outlet HEPA Filter

- Push the button on the Air Outlet Grill, remove the Air Outlet Grill from the body. (Fig13)
- Take out the Air Outlet HEPA Filter. (Fig14)
- Replace with a new one or wash it. It is recommended to have a wash or replace a new one each half year.



Caution: Use only original spare part.

5. Storage

- Store your machine with care and in a cool dry place.

Troubleshooting

Do not disassemble or attempt to repair the machine yourself

Conditions	Possible Cause and Solution
<ul style="list-style-type: none"> The machine stops during operation and all four suction power indicator lights start blinking together. 	<ul style="list-style-type: none"> Wait for about 30 seconds before you operate the machine again. This lets the machine reset whilst you identify one of the following possible causes. The water has turned very dirt and mirky. Empty the water container and replace with clean water. The water level is above the maximum level. Reduce the water level. The selected suction power level is too high for the current cleaning application. Reduce the suction power. The airflow is blocked. Remove the blockage.
<ul style="list-style-type: none"> The machine does not start 	<ul style="list-style-type: none"> AC supply is not properly connected the AC cord to electrical supply.
<ul style="list-style-type: none"> Noticeable decrease in the suction power 	<ul style="list-style-type: none"> The HEPA filter requires replacement. Change a new one. There is a blockage. Remove the cleaning tools and attachments from the machine and remove the blockage.
<ul style="list-style-type: none"> Leakage of water when using for cleaning of liquid waste. 	<ul style="list-style-type: none"> The Switch Float is blocked. Unblock it by cleaning.

Technical characteristics

Model	ORION OVC-021
Power	1200-1400W
Voltage	220/240V~50Hz
Noisy level	≤82dBa
Dust tank capacity	1,5L – loading water, 3L – sucking water
Power cord length	5m
Net weight	10,5kg
Gross weight	12kg
Body size	44 x 30 x 29cm
Unit box dimension	39 x 59 x 42cm
Color	Blue

Completion

Vacuum cleaner
Long flexible hose with handle
Telescopic stainless steel tube
Up-down adjustable metal floor brush
Duster brush
Crevice nozzle
Water brush
Air turbo rotating brush
User's guide
Warranty card

Extra information on ORION company web-site www.orion.ua

We take your opinion and offers by E-mail support@orion.ua